




**Pattern:** 10 sheets **Assembly Instructions:** 2 sheets **Number of Parts:** 11; and 56 for the ornaments

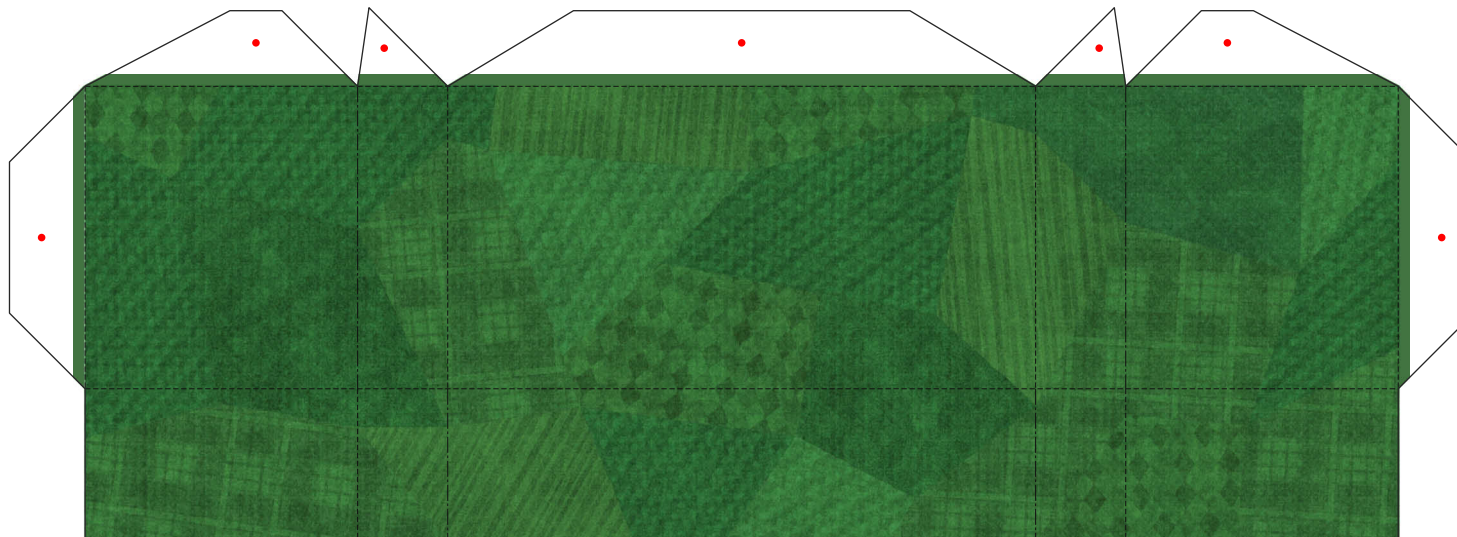
----- Mountain fold    -.-.-.-.- Valley fold    \_\_\_\_\_ Scissors line  
 Cut out     Glue tab

**You will need:** Scissors, glue, ruler, a used ball-point pen

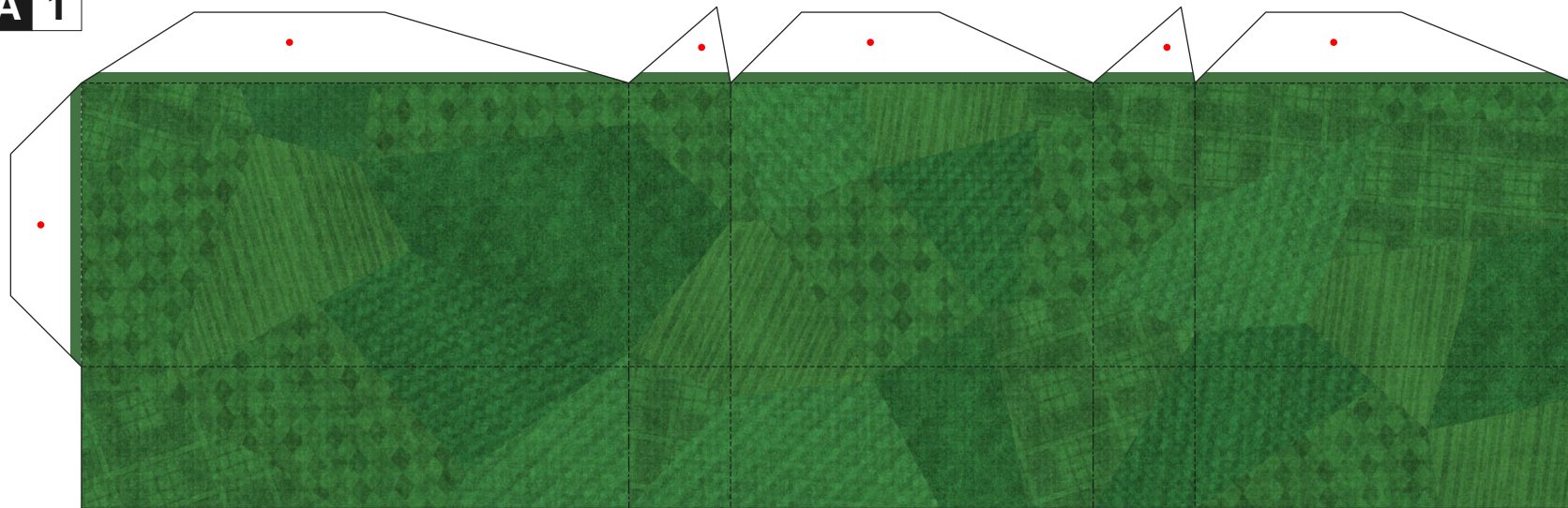
**Assembly Tip:** Trace along the folds with a ruler and a used pen (no ink) to get a sharper, easier fold.

 **[Caution]** Glue, scissors and other tools may be dangerous to young children, so be sure to keep them out of the reach of young children.

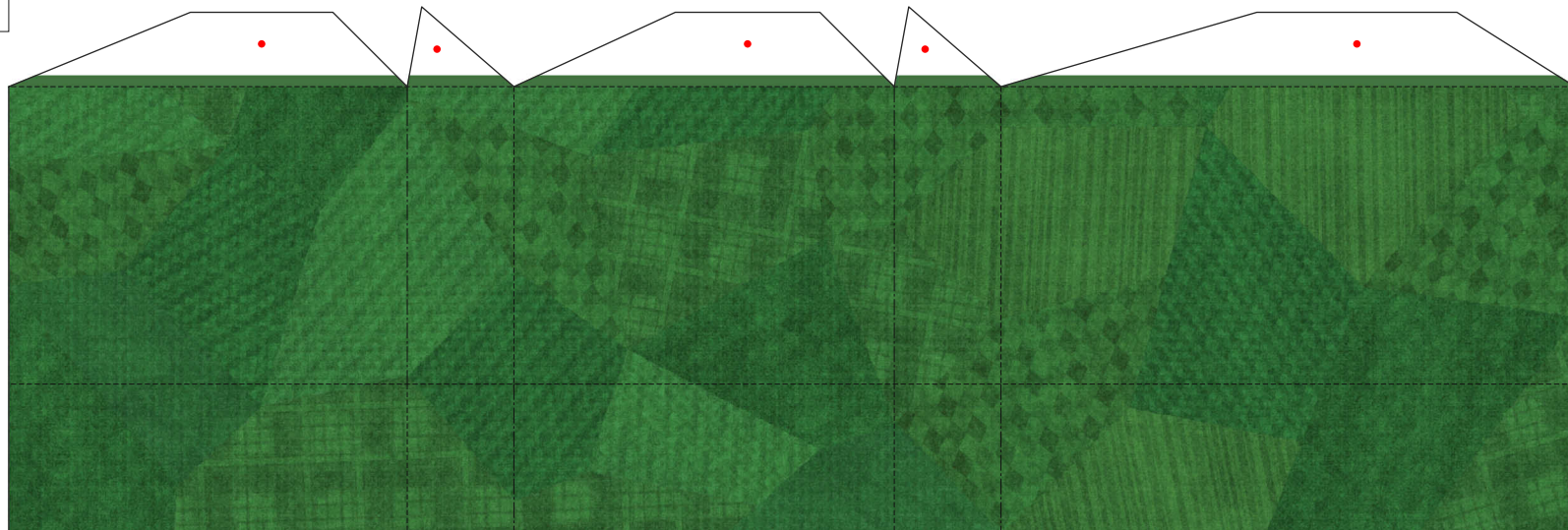
**A 3**



**A 1**



**A 2**





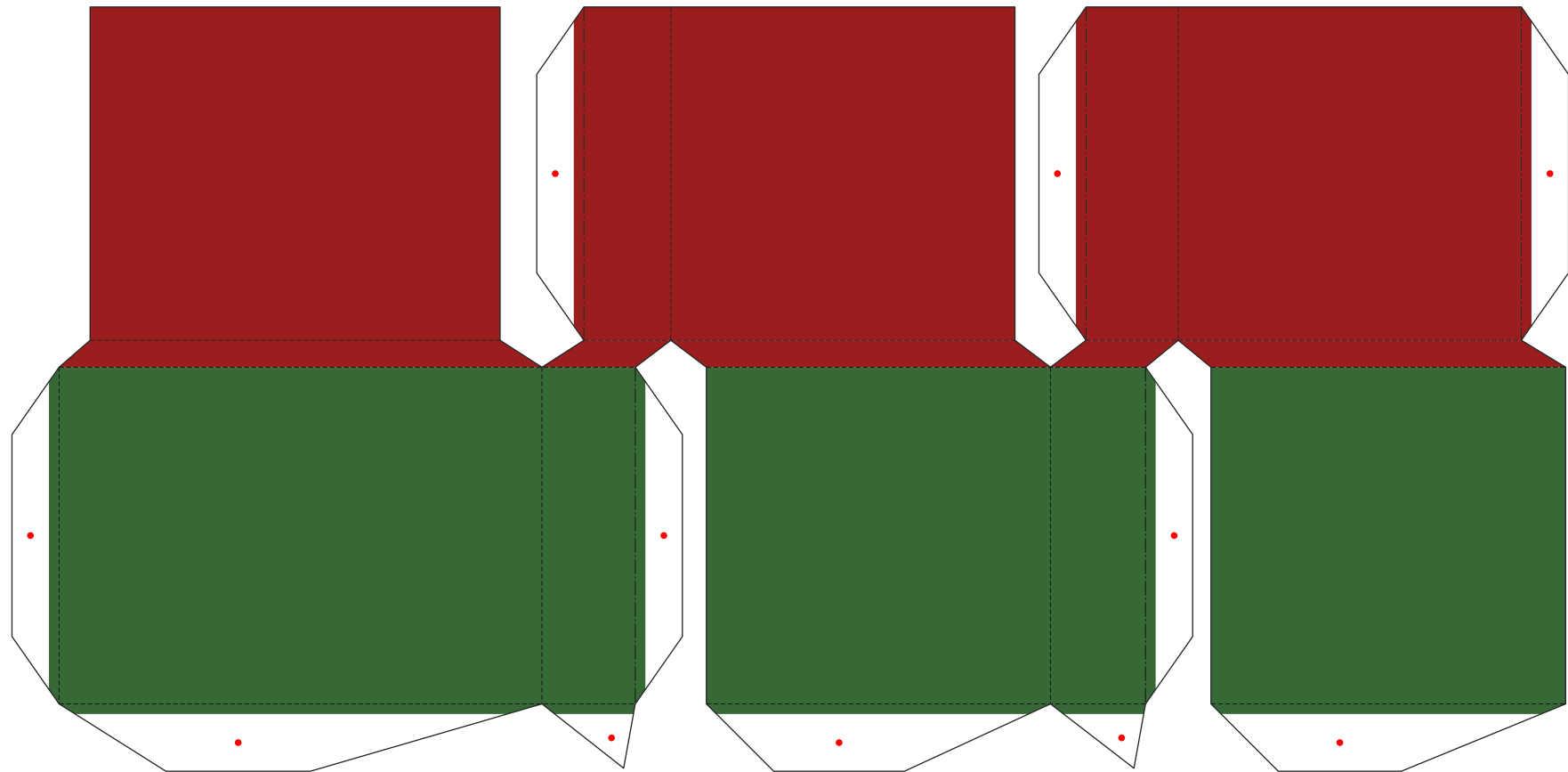
**A 4**



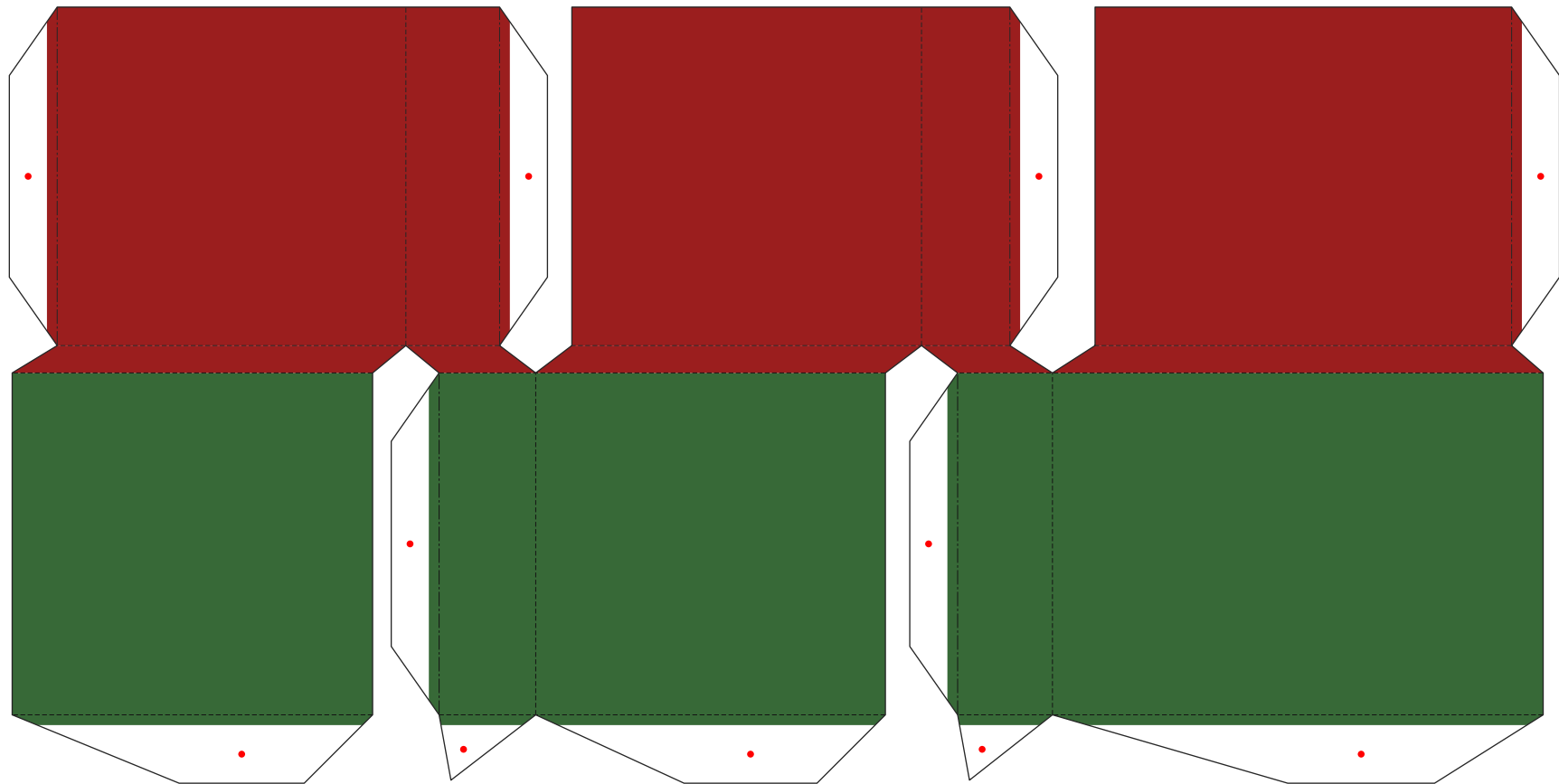
**A 5**



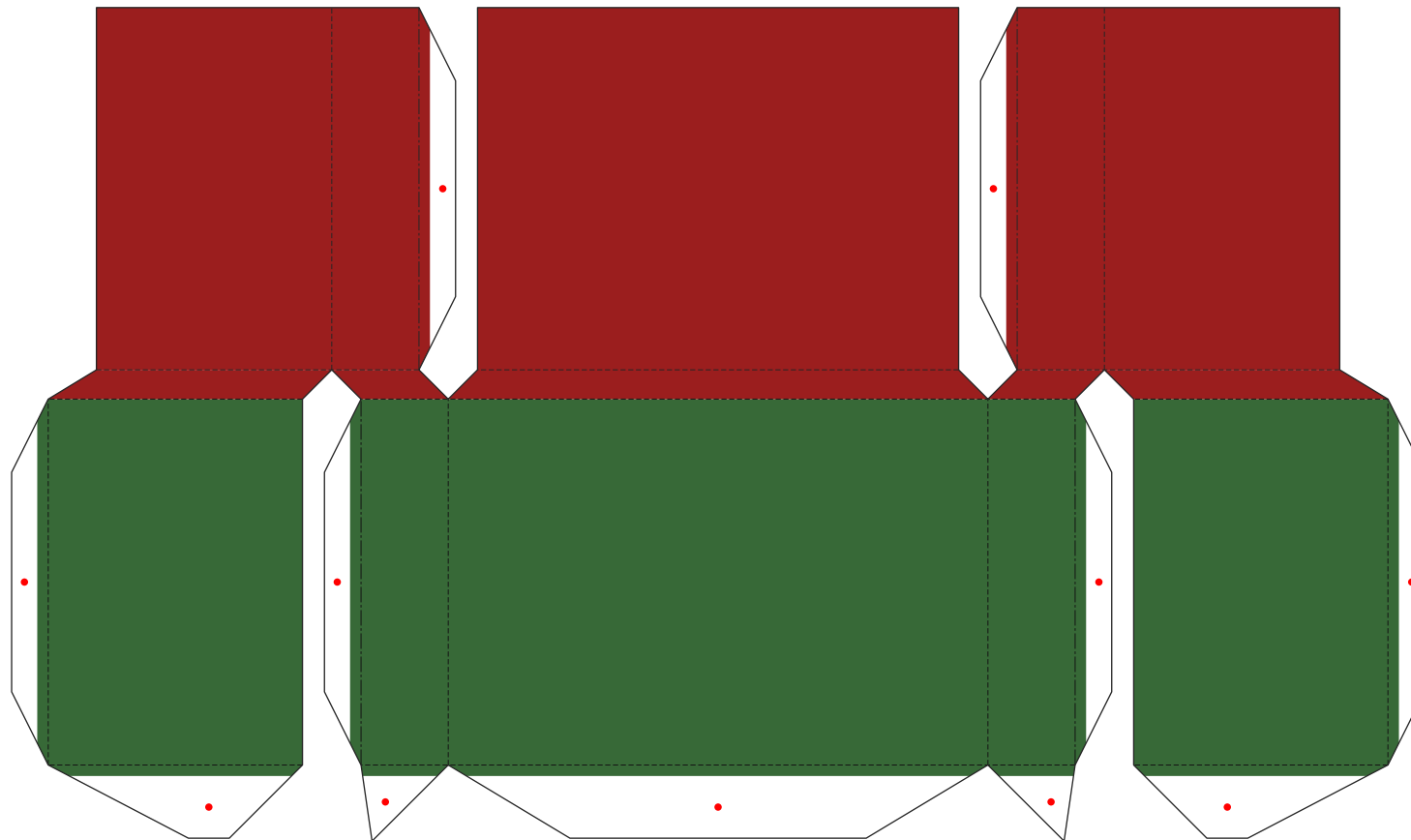
**B 1**



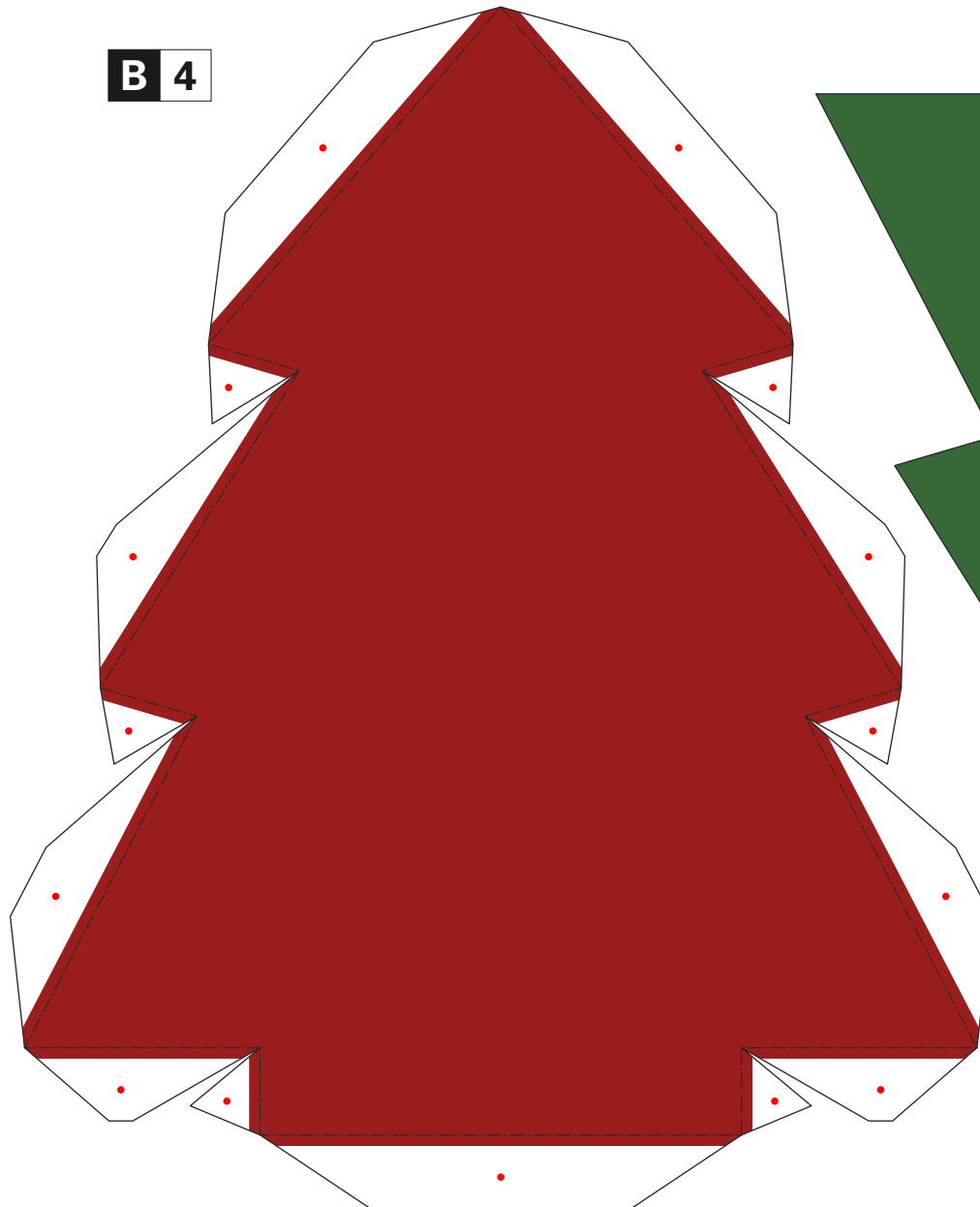
B 2



**B 3**

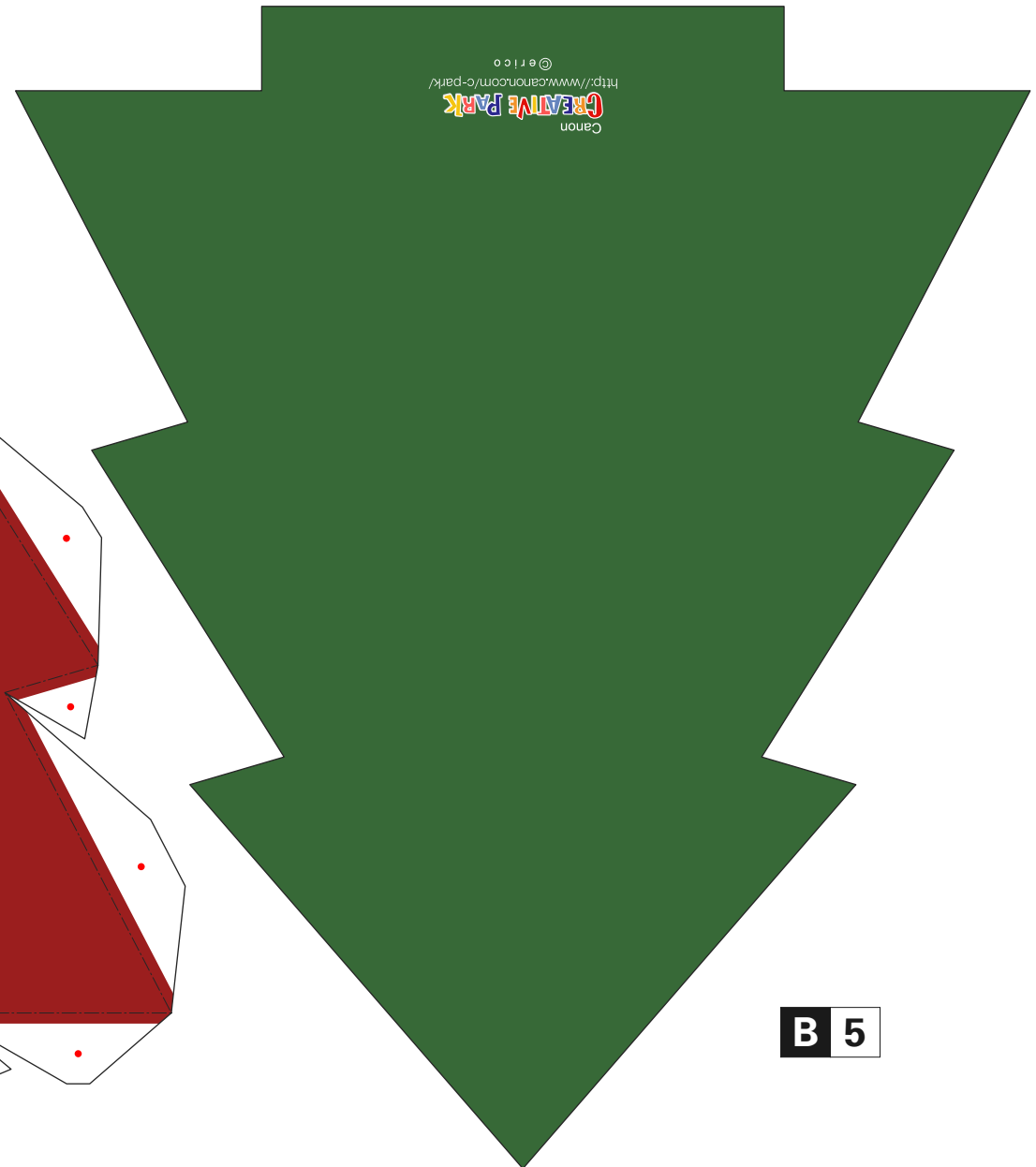


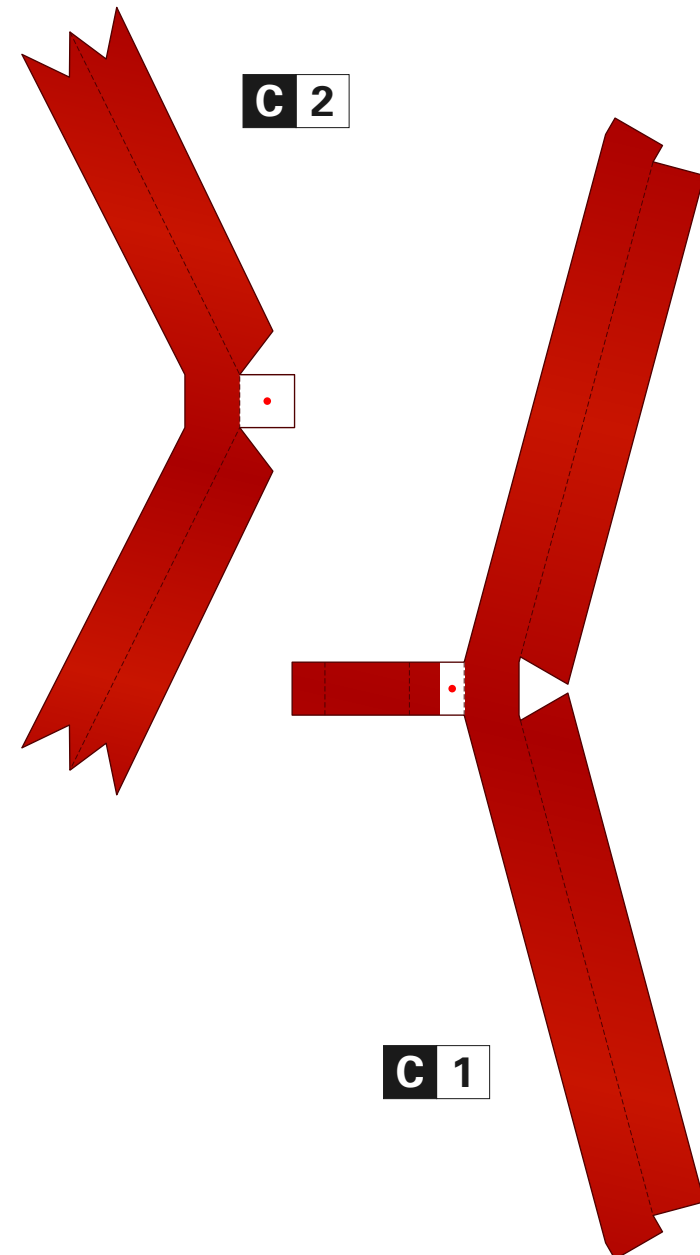
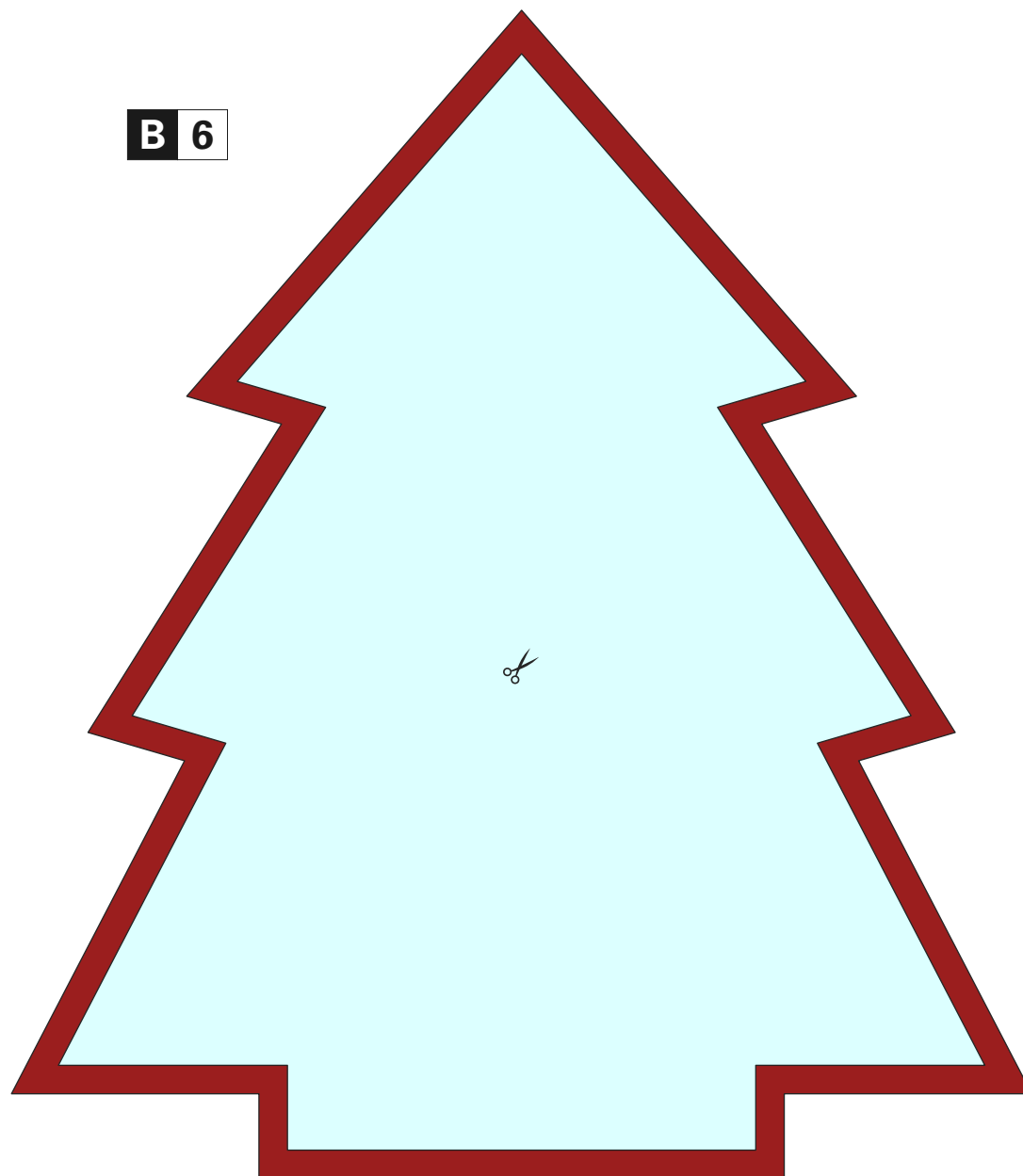
**B 4**



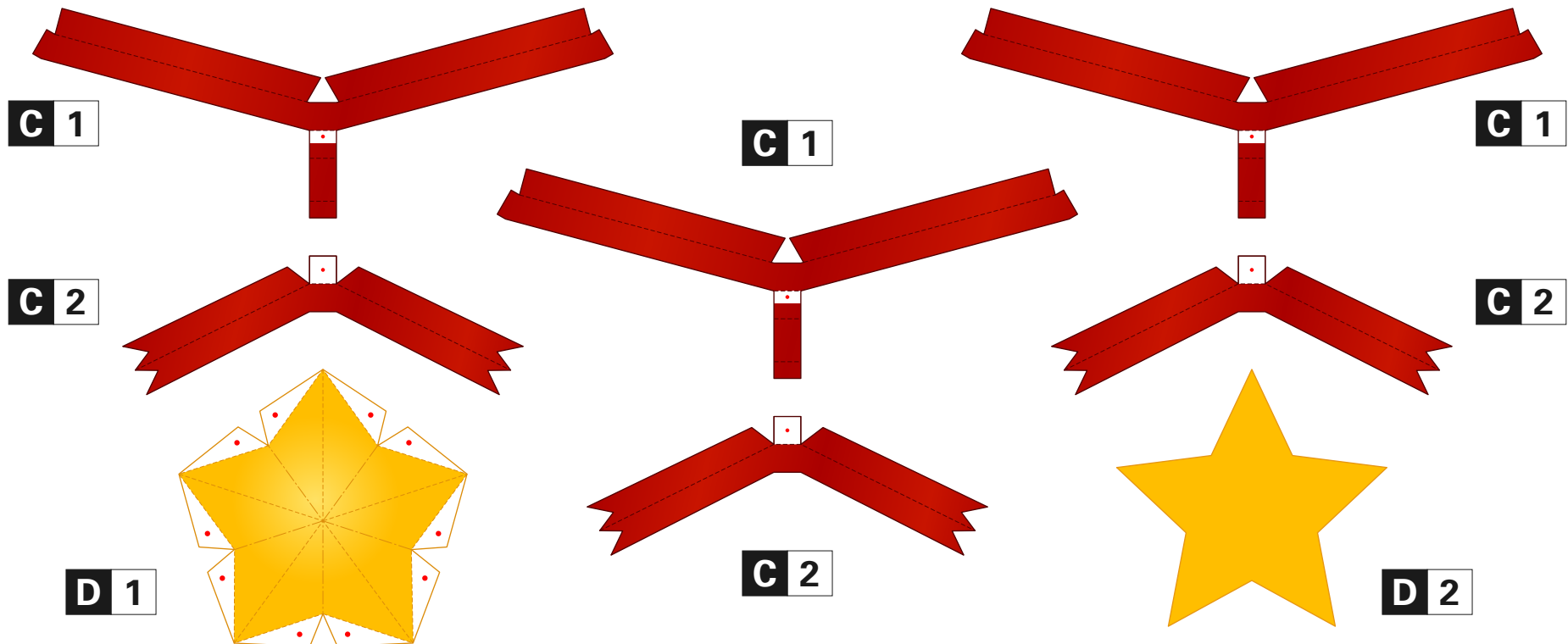
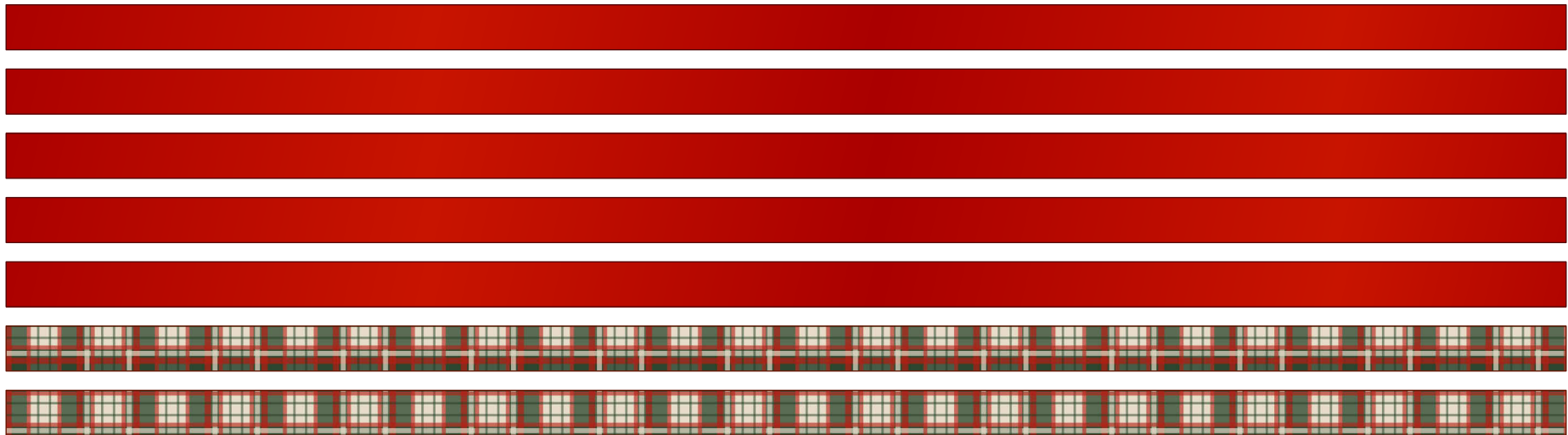
Canon  
CREATIVE PARK  
<http://www.canon.com/c-park/>  
© erico

**B 5**





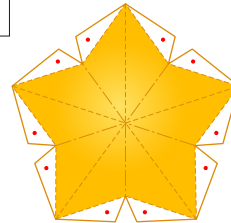




\*All parts without numbers are decorations  
which do not need to be assembled.



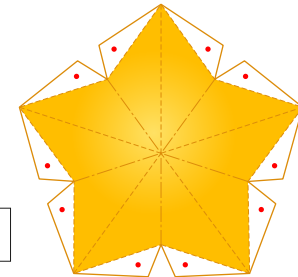
**D 1**



**D 2**



**D 1**



**D 2**

